

CUSTOM BUILT VEHICLE CABINETS



**FIRE
RESCUE**

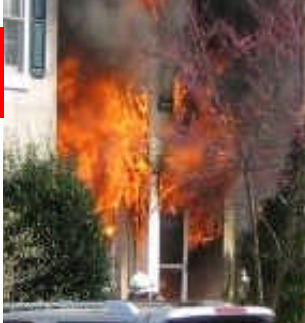
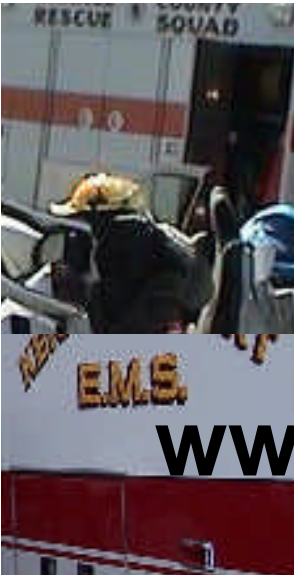
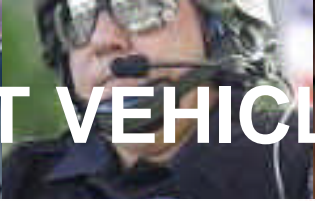
EMS

LAW ENFORCEMENT

SPECIAL RESPONSE

1-579-8888

www.vehiclecabinetry.com





Custom Vehicle Cabinets from Vehicle Cabinetry Company

Vehicle Cabinetry Company provides custom made vehicle cabinets to meet the needs of today's Emergency Services. If you need a Fire Chief's vehicle cabinet, EMS response cabinet, Police Unit Cabinet or Incident Command cabinet we are your company. You can choose from one of our stock designs or have a unit custom made for you without the custom price. Order from our distributors or call us to assist you.

As Always, FREE CAD design for your custom vehicle cabinetry needs.

FIRE/RESCUE CABINETRY

FD-101



48" W x 24" D x 28" H
Command Board, O2 storage, extinguisher storage, medic bag, SCBA & equipment storage and more
SCBA bracket is an additional option

FD-102



48" W x 24" D x 30" H
Command Board, O2 storage, extinguisher storage, medic bag, SCBA & equipment storage, file drawer and more

FD-103



48" W x 24" D x 26" H
Command Board, O2 storage, extinguisher storage, SCBA, turnout gear and other items.

FD-105



48" W x 24" D x 30" H
Command board, SCBA and equipment storage area radio mount board, laptop drawer, file drawer, writing surface area and more

FD-106



48" W x 24" D x 28" H
Command board, medic bag, SCBA and equipment storage area radio mount board and more

FD-107



48" W x 24" D x 28" H
Command Board, O2 storage, extinguisher storage, medic bag, SCBA, turnout gear and more
Diamondplate is an additional option

FD-108



48" W x 24" D x 30" H
Command board, medic bag, SCBA and equipment storage area O2 storage, extinguisher storage, file drawer and more

FD-109



48" W x 24" D x 28" H
Command Board, O2 storage, extinguisher storage, medic bag, SCBA, turnout gear and more
SCBA bracket is an additional option
Flashlight is an additional option

These cabinets are designed for SUVs. Each cabinet has its own unique features.

Determine your needs and view our pre-engineered layouts. If you need a special design or a change to one of our existing cabinets, we are the company you need.

These units are the creations of the people who have used them.

Actual members of the service

Contact us at 877-579-8804



Custom Vehicle Cabinets from Vehicle Cabinetry Company

Vehicle Cabinetry Company offers a variety of options, including color options for your cabinet finish. You can choose from grey, beige, blue or green. You can also have any area finished in .188 diamondplate for added protection in areas such as SCBA or tool storage areas. Our EMS cabinets have an optional heater for keeping your medical drugs from freezing in cold weather.

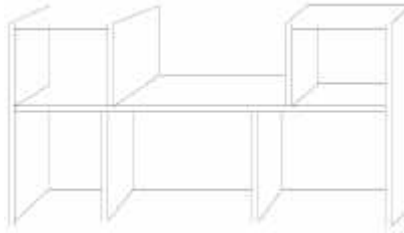
EMS CABINETRY

EMS-201



48" W x 30" D x 26" H
MCI tracking board, O2 storage, medic bag, equipment storage and more

EMS-202



48" W x 24" D x 30" H
Designed for storage of multiple EMS items including AED, medic bags, O2 and more

EMS-203



48" W x 24" D x 26" H
Designed for storage of multiple EMS items including AED, medic bags, O2 and more

EMS-204



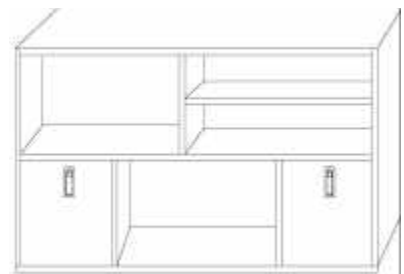
48" W x 24" D x 30" H
Our most popular EMS design. MCI command board, adjustable shelves O2 storage medic bag storage, file drawer and more items for storage

EMS-205



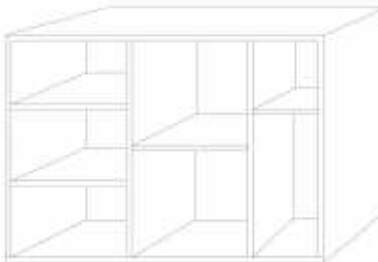
48" W x 28" D x 28" H
Storage for multiple EMS items, AED, O2, medic bags and much more.

EMS-206



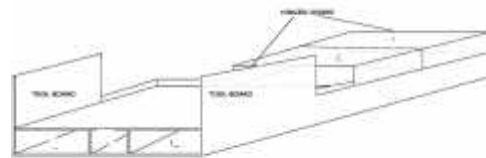
48" W x 24" D x 30" H
Two roll out drawers and storage for multiple types of EMS equipment

EMS-209



48" W x 24" D x 32" H
Storage for multiple EMS items, AED, O2, medic bags and much more.

EMS-207



48" W x 77" D x 8" H at the rear and 14" H high at the front. Equipped with (2) side boards for mount various items, storage for long boards and other long equipment. Also lift up storage compartments accessed from side doors. Open storage area on top of unit

All of our EMS cabinets can be extended to fill the entire rear section of your SUV, including Durangos and Explorers. When ordering always remember to specify your vehicle type to determine the proper fit. Newer Expeditions will need a mounting platform due to the 3rd row seat designed body. Cabinet options are available for access storage from the side doors. Special heater units are also available.

Contact us at 877-579-8804

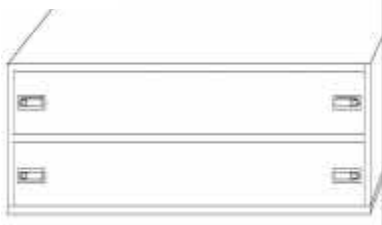


Custom Vehicle Cabinets from Vehicle Cabinetry Company

Our variety of Law Enforcement cabinetry has many available features. Push button combination locks, multi point "D" ring locks, Medeco locks, aluminum weapons storage drawers, weapon cushion storage and more.

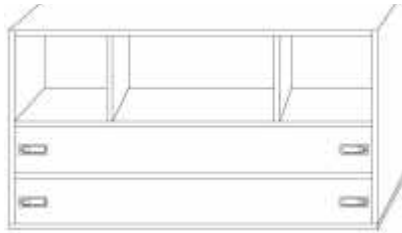
LAW ENFORCEMENT CABINETRY

PD-401



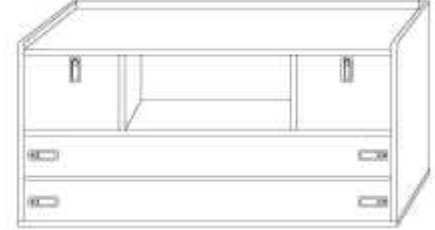
48" W x 24" D x 15" H
Two pull out drawers, which are 6" in height each, for storage of various types of equipment. Drawers can be fit to any type of optional locks.

PD-402



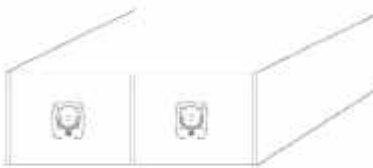
48" W x 24" D x 26" H
Two drawers which are available with optional lock features and storage for road safety items as well as other equipment

PD-403



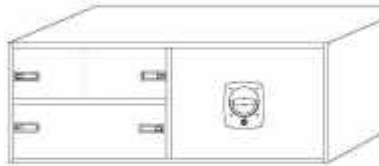
48" W x 24" D x 26" H
2 large drawers and 2 smaller drawers. Equipment storage area including area for storage on top of unit. Optional cargo nets are available

PD-404



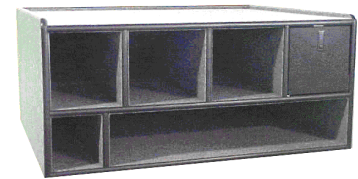
48" W x 39" D x 18" H
2 pull out drawers with heavy duty slides. Multi point "D" ring locks. Optional non-skid material can be added on top for other storage

PD-405



48" W x 24" D x 18" H
3 drawers, one with multi point lock, top drawer has center divider. Other optional divider items are available. Other locking systems also available

PD-406



48" W x 39" D x 24" H
Storage for multiple traffic safety equipment as well as other equipment. Pull out drawer is a nice spot for flare storage

PD-407



48" W x 39" D x 32" H
Storage for multiple traffic safety equipment as well as other equipment. Pull out drawer is a nice spot for road flare storage

PD-408



48" W x 24" D x 18" H
Multiple locking drawers for various equipment storage. Optional drawer dividers are available. Various drawer locks are also available

These cabinets are designed for SUVs. Each cabinet has its own unique features.

Determine your needs and view our pre-engineered layouts. If you need a special design or a change to one of our existing cabinets, we are the company you need.

We realize that each agency has their own needs and we are here to help you meet those needs. Call us for a special design unit.

Contact us at 877-579-8804



Custom Vehicle Cabinets from Vehicle Cabinetry Company

Every Incident Commander likes to operate in their own way. Our variety of Incident Command Cabinets are designed for use for the Fire/Rescue EMS and Law Enforcement Divisions. Units are available with laptop storage drawers, command boards, radio mounting panels, file drawers, writing surfaces as well as other IC needs. Power point connection, pass through holes locking cabinets and drawers and special cabinet illuminations are just a few options that can assist you in your operation.

INCIDENT COMMAND CABINETRY

IC-301



48" W x 24" D x 30" H
IC board, monitor or equipment area, file drawer, laptop storage, printer storage or other equipment storage. None of the equipment shown is provided

IC-302



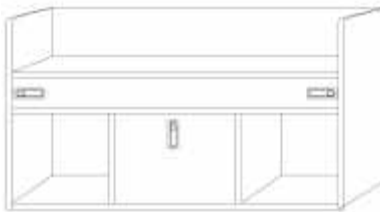
48" W x 24" D x 30" H
IC board, radio mounting board which can be expanded to fit additional radios if needed and other storage areas. Radios not included.

IC-303



48" W x 24" D x 30" H
IC board, file drawer, laptop drawer and other storage areas. Optional power point and clock accessories are available

IC-304



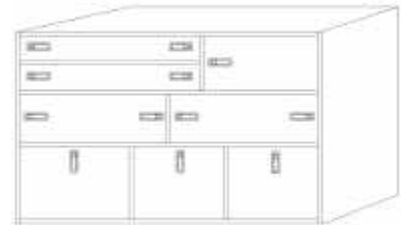
48" W x 24" D x 24" H
IC board, file drawer, storage areas including on top of unit. Optional high pressure laminate or plexiglass is available for top section

IC-305



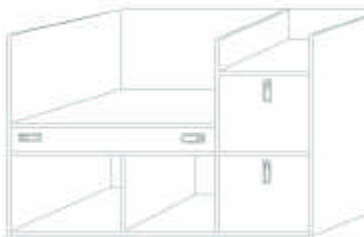
48" W x 24" D x 30" H
IC board, 2 pull out drawers for storage, laptop drawer and radio mounting plate on top portion of cabinet

IC-306



48" W x 30" D x 32" H
2 File drawers, 4 other various size drawers, pull out flip up command board and storage compartment with door.

IC-307



48" W x 30" D x 28" H
Command board, two file drawers, laminate writing area, storage for multiple command items

IC-309



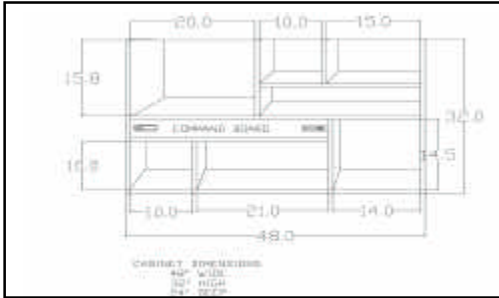
48" W x 30" D x 28" H
Command Board, file drawer, set back shelf for storage of books or other accessories, radio mounting board and other storage areas.

These cabinets are designed for SUVs. Every Incident Commander has different needs, that is why there are many different designs. There are many items for Incident Command, each with its own shape and size, that's why we are here to make you equipment fit right. When planning your cabinet, always have the full outside dimensions of your equipment to assure the proper fit. If you need help, call us, we will gladly assist you with your plans.

Contact us at 877-579-8804



Custom Vehicle Cabinets from Vehicle Cabinetry Company



It starts here. Your design is carefully created to assure your fit and size.



Using only multi-layer birch wood, your cabinet is crafted and begins its assembly. You will not find particle board or melamine in our cabinets like other manufacturers use.



High quality adhesives are applied evenly to assure your marine grade carpet stays where it belongs, even in wet weather.



The cabinet is then brought to the finishing table where the marine grade poly boards are secured to the drawer faces, locks and latches are secured and all edges are finished with a poly type "T" molding.



Then it is time to wrap it, pack it and.....



.....Ship it right to your door!

CABINET FINISHES

Our cabinets are finished in with a marine grade carpet. Available in grey, beige, green or dark blue, to match your interior color. High pressure laminate in any color of your choice is also available.

OTHER FINISH OPTIONS

Diamond plate is available for heavy duty use areas, such as, SCBA areas and work tool areas.

LOCKS AND LATCHES

Key Locks, Combo Locks, Push Button Locks, "D" ring latches, push button latches, paddle handle latches are just a few of the options that are available for closing and securing your drawers and doors.

SCBA BRACKETS



SCBA brackets are available to fit any Air Pak

Contact us at 877-579-8804